



Elmo Rietschle

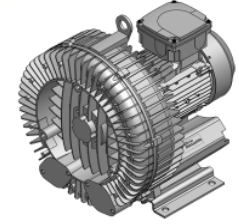
# G-BH 1 N

## Data sheet 2BH1 630

Side channel blower with IE3-motors

IE3

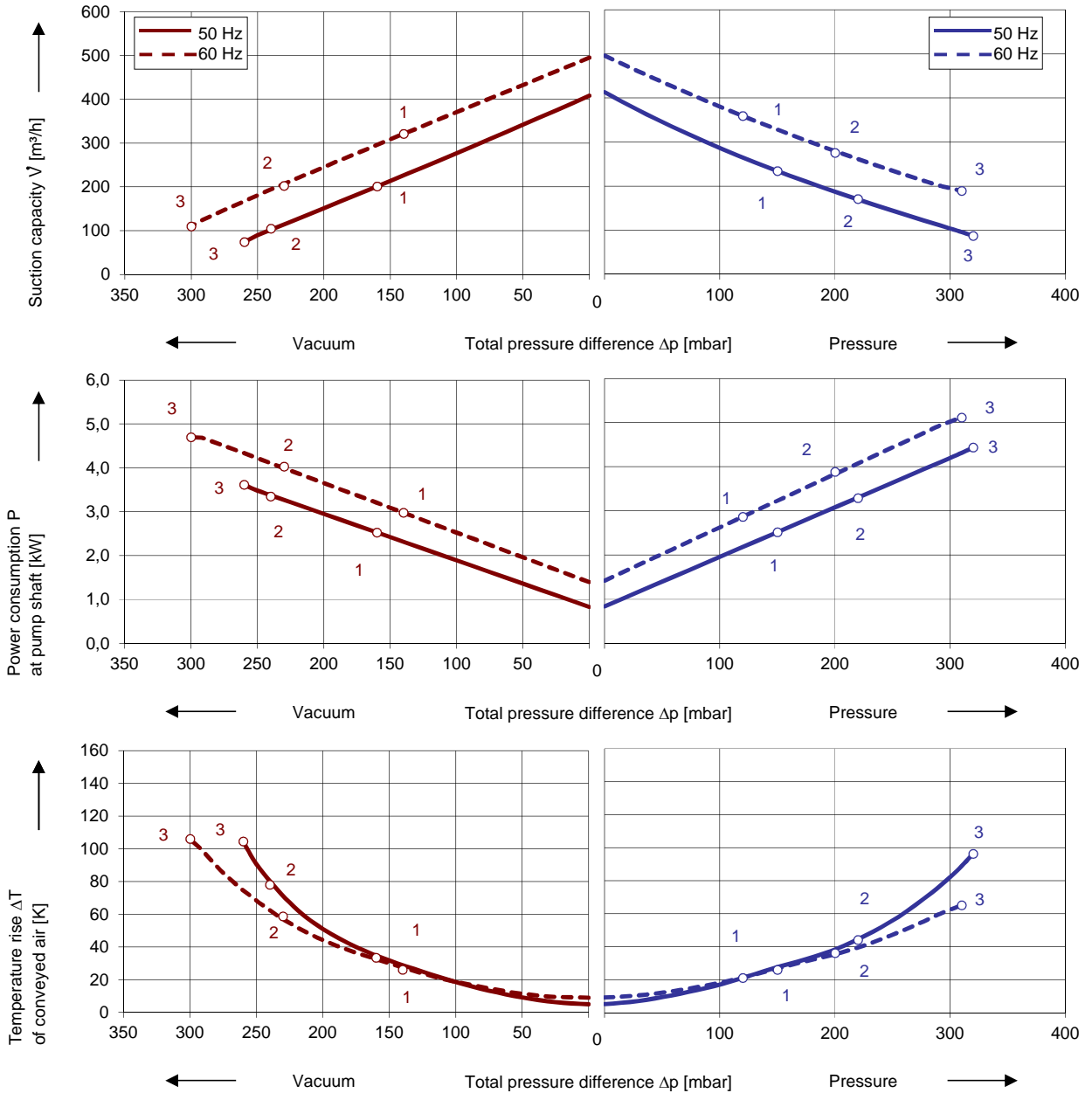
CE US



### Performance curves

#### Vacuum operation

#### Compressor operation



The performance curves are based on air at a temperature of 15 °C and an atmospheric pressure of 1013 mbar with a tolerance of  $\pm 10\%$ . The total pressure differences are valid for suction and ambient temperature up to 25 °C. For other conditions please get in touch with us.

Every G-BH pump can be used both as vacuum pump and compressor in continuous operation over the total performance curve range. The motors are available as standard in protection category IP 55 and insulation class F. The vacuum pumps / compressors are UL and CSA approved.

Selection and ordering data										
Type										
No.	Fre- quency Hz	Rated			Max. differential pressure <sup>2)</sup>		Sound pres. <sup>3)</sup> Level dB(A)	Efficiency class <sup>4)</sup>	Weight approx. kg	Order No.
		Voltage <sup>1)</sup> V	Current A	Power kW	Vacuum mbar	Pressure				
<b>IE3 3~ 50/60 Hz, IP55, Insulation material class F, UL 1450 and CAN/CSA C22.2 No. 68-09 (certificate number E225239)</b>										
1	50	190-210 Δ	9,9 Δ	2,50	-160	150	64	IE3	36	2BH1630-0AK11
	60	190-210 YY / 380-420 Y	12,0 YY / 6,0 Y	3,00	-140	120	70	IE3		
	60	200 YY	12,0 YY	3,00	-140	120	70	NP		
2	50	190-210 Δ	13,3 Δ	3,45	-240	220	71	IE3	40	2BH1630-0AK21
	60	190-210 YY / 380-420 Y	15,2 YY / 7,6 Y	4,0	-230	200	74	IE3		
	60	200 YY	15,2 YY	4,0	-230	200	74	NP		
3	50	190-210 Δ	17,1 Δ	4,6	-260	320	69	IE3	52	2BH1630-1AK31
	60	190-210 YY / 380-420 Y	19,6 YY / 9,8 Y	5,3	-300	310	71	IE3		
	60	200 YY	19,6 YY	5,3	-300	310	71	NP		
<b>IE3 3~ 50/60 Hz, IP55, Insulation material class F, UL 1450 and CAN/CSA C22.2 No. 68-09 (certificate number E225239)</b>										
1	50	220-240 Δ / 380-420 Y	8,6 Δ / 5,0 Y	2,50	-160	150	64	IE3	36	2BH1630-0AK16
	60	220-240 YY / 440-480 Y	10,4 YY / 5,2 Y	3,00	-140	120	70	IE3		
	60	230 YY / 460 Y	10,4 YY / 5,2 Y	3,00	-140	120	70	NP		
2	50	220-240 Δ / 380-420 Y	11,6 Δ / 6,7 Y	3,45	-240	220	71	IE3	40	2BH1630-0AK26
	60	220-240 YY / 440-480 Y	13,2 YY / 6,6 Y	4,0	-230	200	74	IE3		
	60	230 YY / 460 Y	13,2 YY / 6,6 Y	4,0	-230	200	74	NP		
3	50	220-240 Δ / 380-420 Y	14,9 Δ / 8,6 Y	4,6	-260	320	69	IE3	52	2BH1630-1AK36
	60	220-240 YY / 440-480 Y	17,0 YY / 8,5 Y	5,3	-300	310	71	IE3		
	60	230 YY / 460 Y	17,0 YY / 8,5 Y	5,3	-300	310	71	NP		
<b>IE3 3~ 50/60 Hz, IP55, Insulation material class F, UL 1450 and CAN/CSA C22.2 No. 68-09 (certificate number E225239)</b>										
1	50	475-525 Y	4 Y	2,50	-160	150	64	IE3	36	2BH1630-0AQ13
	60	550-600 Y	4,1 Y	3,00	-140	120	70	NP		
	60	475-525 Y	5,4 Y	3,45	-240	220	71	IE3		
2	50	475-525 Y	5,2 Y	4,00	-230	200	74	NP	40	2BH1630-0AQ23
	60	550-600 Y	6,9 Y	4,6	-260	320	69	IE3		
	60	475-525 Y	6,8 Y	5,3	-300	310	71	NP		
3	50	550-600 Y	6,8 Y	5,3	-300	310	71	NP	52	2BH1630-1AQ33
	60	550-600 Y	6,8 Y	5,3	-300	310	71	NP		
	60	550-600 Y	6,8 Y	5,3	-300	310	71	NP		
<b>IE3 3~ 50/60 Hz, IP55, Insulation material class F, UL 1450 and CAN/CSA C22.2 No. 68-09 (certificate number E225239)</b>										
1	50	380-420 Δ / 660-725 Y	5,0 Δ / 2,9 Y	2,5	-160	150	64	IE3	36	2BH1630-0AQ17
	60	440-480 Δ	5,2 Δ	3,0	-140	120	70	IE3		
	60	460 Δ	5,2 Δ	3,0	-140	120	70	NP		
2	50	380-420 Δ / 660-725 Y	6,7 Δ / 3,9 Y	3,45	-240	220	71	IE3	40	2BH1630-0AQ27
	60	440-480 Δ	6,6 Δ	4,0	-230	200	74	IE3		
	60	460 Δ	6,6 Δ	4,0	-230	200	74	NP		
3	50	380-420 Δ / 660-725 Y	8,6 Δ / 5,0 Y	4,6	-260	320	69	IE3	52	2BH1630-1AQ37
	60	440-480 Δ	8,5 Δ	5,3	-300	310	71	IE3		
	60	460 Δ	8,5 Δ	5,3	-300	310	71	NP		
<b>IE3 3~ 50/60 Hz, IP55, Insulation material class F, UL 1450 and CAN/CSA C22.2 No. 68-09 (certificate number E225239)</b>										
1	50	220-240 Δ / 380-420 Y	8,6 Δ / 5 Y	2,50	-160	150	64	IE3	36	2BH1630-0AQ16
	60	440-480 Y	5,2 Y	3,00	-140	120	70	IE3		
	60	220-240 Δ / 380-420 U	11,6 Δ / 6,7 Y	3,45	-240	220	71	IE3		
2	50	440-480 Y	6,6 Y	4,0	-230	200	74	IE3	40	2BH1630-0AQ26
	60	220-240 Δ / 380-420 U	15,1 Δ / 8,7 Y	4,6	-260	320	69	IE3		
	60	440-480 Y	8,5 Y	5,3	-300	310	71	IE3		
3	50	220-240 Δ / 380-420 U	15,1 Δ / 8,7 Y	4,6	-260	320	69	IE3	52	2BH1630-1AQ36
	60	440-480 Y	8,5 Y	5,3	-300	310	71	IE3		
	60	440-480 Y	8,5 Y	5,3	-300	310	71	IE3		

- 1) In case of frequency converter operation the standard motor insulation system is suitable for converter input voltages up to 500 V.
- 2) Relief valves available for limiting differential pressure.
- 3) Measuring surface sound pressure level acc. to EN ISO 3744, measured with an equivalent unit at a distance of 1 m. The pump is throttled to an average suction pressure, with piping connected, but no relief valves fitted, tolerance ±3 dB (A).
- 4) The motors according to NEMA MG1-12. NP=NEMA Premium; NEMA Premium includes IE3.

All G-BH match the 2006/42/EC (machinery) and 2014/35/EU (low voltage) directives and the EN 60034 norm "Rotating electrical machines".

Service factor (SF) and motor efficiency according NEMA MG1-12.

Voltage tolerances for three phase motors are +/-10%.

The frequency tolerance is +/- 2% maximum.

Voltage range		Efficiency η	60 Hz	2BH1...-0	□	□
50 Hz	60Hz					
<b>3~</b>						
200 VΔ	200 V YY / 230 VΔ / 400 VY	NEMA Premium IE3	•	K	1	1
190-210 VΔ	190-210 VYY / 220-240 VΔ / 380-420VY					
200 V YY / 230 VΔ / 400 VY	230 V YY / 460 VY	NEMA Premium IE3	•	K	6	6
190-210 VYY / 220-240 VΔ / 380-420VY	220-240 VYY / 440-480VY					
475-525 V Y	550-600 V Y	NEMA Premium IE3	•	Q	3	3
220-240 VD / 380-420VY	440-480VY					
400 VΔ / 690 V Y	460 VΔ	NEMA Premium	•	Q	7	7

Changes in particular of the quoted performance curve, data and weights may occur without prior notice. The data given does not constitute an obligation from our side to deliver as shown.



Your Ultimate Source for Vacuum and Pressure

Gardner Denver Deutschland GmbH  
Industriestraße 26  
97616 Bad Neustadt - Germany  
Tel.: +49 9771 6888-0  
Fax: +49 9771 6888-4000

www.elmorietschle.com • er.de@irco.com

Gardner Denver Schopfheim GmbH  
Johann-Sutter-Straße 6+8  
79650 Schopfheim - Germany  
Tel.: +49 7622 392-0  
Fax: +49 7622 392-300