

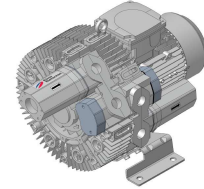
G-BH 7 N

Data sheet 2BH7 220

Side channel blower with IE3-motors

IE3

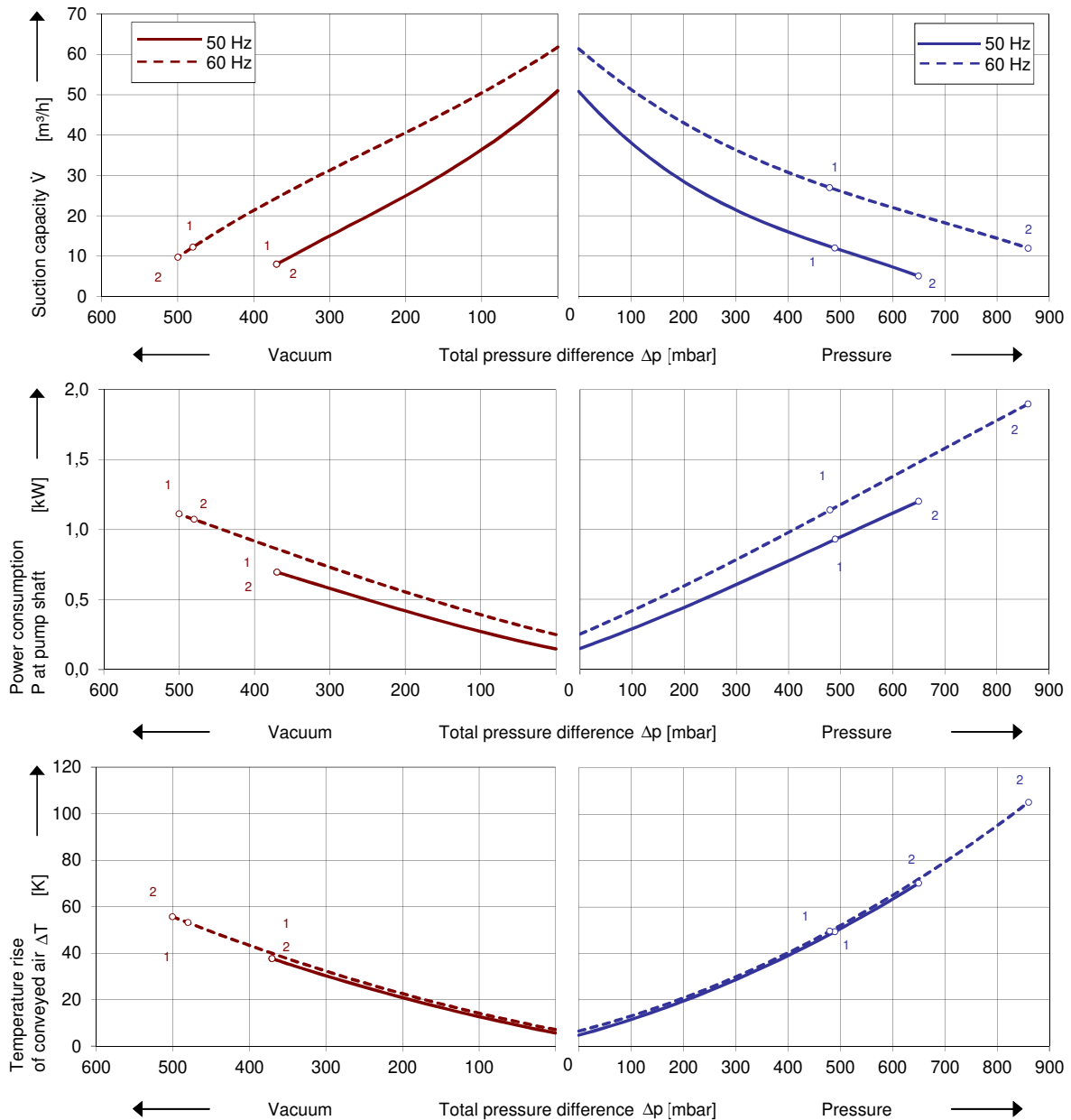
cRU[®] US



Performance curves

Vacuum operation

Compressor operation



The performance curves are based on air at a temperature of 15 °C and an atmospheric pressure of 1013 mbar with a tolerance of ± 10 %. The total pressure differences are valid for suction and ambient temperature up to 25 °C. For other conditions please get in touch with us.

Every G-BH pump can be used both as vacuum pump and compressor in continuous operation over the total performance curve range. The motors are available as standard in protection category IP 55 and insulation class F. The vacuum pumps / compressors are UL and CSA approved.

Selection and ordering data

Type 2BH7 220

No.	Fre- quency	Rated			Max. differential pressure ²⁾		Sound pressure level ³⁾	Efficiency ⁴⁾	Weight Approx.	Order No.
		Voltage ¹⁾	Current	Power	Vacuum	Pressure				
	Hz	V	A	kW	mbar		dB(A)	0	kg	
IE3 3- 50/60 Hz, IP55, Insulation material class F, UL 1450 and CAN/CSA C22.2 No. 68-09 (certificate number E225239)										
1	50	190-210 Δ	4,2 Δ	1,0	-370	490	58	IE3	28	2BH7220-0AK31-1
	60	190-210 YY / 380-420 Y	4,8 YY / 2,4 Y	1,1	-480	480	63	IE3		
	60	200 YY	4,8 YY	1,1	-480	480	63	NP		
2	50	190-210 Δ	6,9 Δ	1,8	-370	650	62	IE3	34	2BH7220-0AK51-1
	60	190-210 YY / 380-420 Y	7,8 YY / 3,9 Y	2,0	-500	860	67	IE3		
	60	200 YY	7,8 YY	2,0	-500	860	67	NP		
IE3 3- 50/60 Hz, IP55, Insulation material class F, UL 1450 and CAN/CSA C22.2 No. 68-09 (certificate number E225239)										
1	50	220-240 Δ / 380-420 Y	3,7 Δ / 2,1 Y	1,0	-370	490	58	IE3	28	2BH7220-0AK36-1
	60	220-240 YY / 440-480 Y	4,2 YY / 2,1 Y	1,1	-480	480	63	IE3		
	60	230 YY / 460 Y	4,2 YY / 2,1 Y	1,1	-480	480	63	NP		
2	50	220-240 Δ / 380-420 Y	6,0 Δ / 3,5 Y	1,8	-370	650	62	IE3	34	2BH7220-0AK56-1
	60	220-240 YY / 440-480 Y	6,8 YY / 3,4 Y	2,0	-500	860	67	IE3		
	60	230 YY / 460 Y	6,8 YY / 3,4 Y	2,0	-500	860	67	NP		
IE3 3- 50/60 Hz, IP55, Insulation material class F, UL 1450 and CAN/CSA C22.2 No. 68-09 (certificate number E225239)										
1	50	500 Y	1,7 Y	1,0	-370	490	58	IE3	28	2BH7220-0AQ33-1
	60	575 Y	1,7 Y	1,1	-480	480	63	NP		
2	50	500 Y	2,8 Y	1,8	-370	650	62	IE3	34	2BH7220-0AQ53-1
	60	575 Y	2,7 Y	2,0	-500	860	67	NP		
IE3 3- 50/60 Hz, IP55, Insulation material class F, UL 1450 and CAN/CSA C22.2 No. 68-09 (certificate number E225239)										
1	50	220-240 Δ / 380-420 Y	3,7 Δ / 2,1 Y	1,0	-370	490	58	IE3	28	2BH7220-0AQ36-1
	60	/ 440-480 Y	/ 2,1 Y	1,1	-480	480	63	IE3		
2	50	220-240 Δ / 380-420 Y	6,0 Δ / 3,5 Y	1,8	-370	650	62	IE3	34	2BH7220-0AQ56-1
	60	/	/ 3,4 Y	2,0	-500	860	67	IE3		
IE3 3- 50/60 Hz, IP55, Insulation material class F, UL 1450 and CAN/CSA C22.2 No. 68-09 (certificate number E225239)										
1	50	380-420 Δ / 660-725 Y	2,1 Δ / 1,2 Y	1,0	-370	490	58	IE3	28	2BH7220-0AQ37-1
	60	440-480 Δ	2,1 Δ	1,1	-480	480	63	IE3		
	60	460 Δ	2,1 Δ	1,1	-480	480	63	NP		
2	50	380-420 Δ / 660-725 Y	3,5 Δ / 1,7 Y	1,8	-370	650	62	IE3	34	2BH7220-0AQ57-1
	60	440-480 Δ	3,4 Δ	2,0	-500	860	67	IE3		
	60	460 Δ	3,4 Δ	2,0	-500	860	67	NP		

- 1) In case of frequency converter operation the standard motor insulation system is suitable for converter input voltages up to 500 V.
- 2) Relief valves available for limiting differential pressure.
- 3) Measuring surface sound pressure level acc. to EN ISO 3744, measured with an equivalent unit at a distance of 1 m. The pump is throttled to an average suction pressure, with piping connected, but no relief valves fitted, tolerance ±3 dB (A).
- 4) The motors according to NEMA MG1-12. NP=NEMA Premium; NEMA Premium includes IE3.

All G-BH match the 2006/42/EC (machinery) and 2014/35/EU (low voltage) directives and the EN 60034 norm "Rotating electrical machines".

Service factor (SF) and motor efficiency according NEMA MG1-12.

Voltage tolerances for three phase motors are +/-10%.

The frequency tolerance is +/- 2 % maximum.

Motor for alternate voltages

		Efficiency ⁴⁾		UL US	
50 Hz	60Hz	60 Hz	2BH7...-... □ . □ -1		
3~					
200 VD	200 V YY / 230 VD / 400 VY	NEMA Premium	•	K	1
190-210 VD	190-210 VYY / 220-240 VD / 380-420VY	IE3	•		
200 V YY / 230 VD / 400 VY	230 V YY / 460 VY	NEMA Premium	•	K	6
190-210 VYY / 220-240 VD / 380-420VY	220-240 VYY / 440-480VY	IE3	•		
475-525 V Y	550-600 V Y	NEMA Premium	•	Q	3
475-525 VD	550-600 VD	NEMA Premium	•	Q	5
220-240 VD / 380-420 V Y	440-480 V Y	IE3	•	Q	6
400 VD / 690 V Y	460 VD	NEMA Premium	•	Q	7

Changes in particular of the quoted performance curve, data and weights may occur without prior notice. The data given does not constitute an obligation from our side to deliver as shown.



Your Ultimate Source for Vacuum and Pressure

Gardner Denver Deutschland GmbH
 Industriestraße 26
 97616 Bad Neustadt - Germany
 Tel.: +49 9771 6888-0
 Fax: +49 9771 6888-4000
 www.elmorietschle.com • er.de@irco.com

Gardner Denver Schopfheim GmbH
 Johann-Sutter-Straße 6+8
 79650 Schopfheim - Germany
 Tel.: +49 7622 392-0
 Fax: +49 7622 392-300