

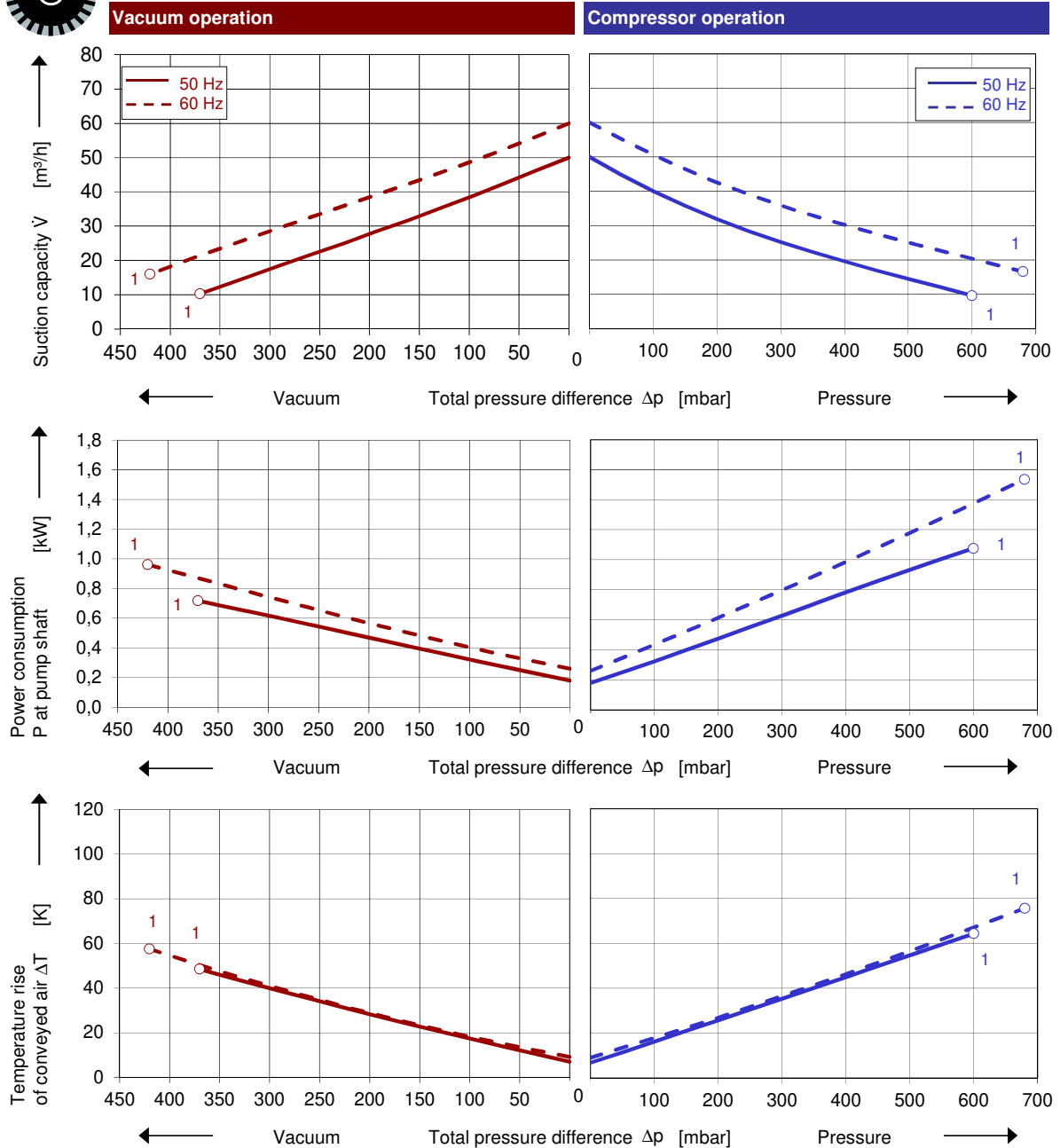
# G-BH7

## Data sheet BH7005-2 (2BH7220)

Side channel blower with 1 phase motor



### Performance curves



The performance curves are based on air at a temperature of 15 °C and an atmospheric pressure of 1013 mbar with a tolerance of  $\pm 10\%$ . The total pressure differences are valid for suction and ambient temperature up to 25 °C. For other conditions please get in touch with us.

Every G-BH pump can be used both as vacuum pump and compressor in continuous operation over the total performance curve range. The motors are available as standard in protection category IP 55 and insulation class F. The vacuum pumps / compressors are UL and CSA approved.

## Selection and ordering data

### Type BH7005-2 (2BH7220)

No.	Fre- quency Hz	Rated			Max. differential pressure		Sound pressure level dB(A) <sup>2)</sup>	Weight Approx. kg	Order No.
		Voltage	Current	Power	Vacuum	Pressure			
		V	A	kW	mbar <sup>1)</sup>				
<b>1~ 50/60 Hz, IP55, Insulation material class F, motor with UL, with attached capacitor for cont. Operation</b>									
1	50	115 Δ / 230 Y	19,0 Δ / 9,5 Y	1,5	-370	600	62	36	<b>BH7005-2ABB-HV5-BA0</b>
	60	115 Δ / 230 Y	20,0 Δ / 10,0 Y	1,75	-420	680	67		
1	50						62	36	<b>BH7005-2ABB-HV4-BA0</b>
	60						67		

1) Relief valves available for limiting differential pressure.

2) Measuring surface sound pressure level acc. to EN ISO 3744, measured with an equivalent unit at a distance of 1 m. The pump is throttled to an average suction pressure, with piping connected, but no relief valves fitted, tolerance ±3 dB (A).


All G-BH match the 2006/42/EC (machinery) and 2014/35/EU (low voltage) directives and the EN 60034 norm "Rotating electrical machines".

The motors comply with EN 60 034 (IEC 60034) and thermal class F.

For three phase motors tolerances are +/-10% for fixed voltage motors and +/-5% for voltage range motors. Single phase machines are designed with a +/- 5% tolerance.

The frequency tolerance is +/- 2 % maximum.

## Motor for alternate voltages [V]

Voltage range		Fixed voltage		c  us	60 Hz	BH7005-2. . . . . <input type="checkbox"/> <input type="checkbox"/>
50 Hz	60 Hz	50 Hz	60 Hz			
<b>1~</b>						
		100 / 200	100 / 200	•		<b>V 4</b>
		115 / 230	115 / 230	•		<b>V 5</b>

Changes in particular of the quoted performance curve, data and weights may occur without prior notice. The data given does not constitute an obligation from our side to deliver as show



Your Ultimate Source for Vacuum and Pressure

**Gardner Denver Deutschland GmbH**

Industriestraße 26  
97616 Bad Neustadt - Germany  
Tel.: +49 9771 6888-0  
Fax: +49 9771 6888-4000

www.elmorietschle.com • er.de@irco.com

**Gardner Denver Schopfheim GmbH**

Johann-Sutter-Straße 6+8  
79650 Schopfheim - Germany  
Tel.: +49 7622 392-0  
Fax: +49 7622 392-300