



**Elmo  
Rietschle**

**IE3**



# L-BV 54 N

## Data sheet 2BV5 471

### Liquid ring compressor

#### General information

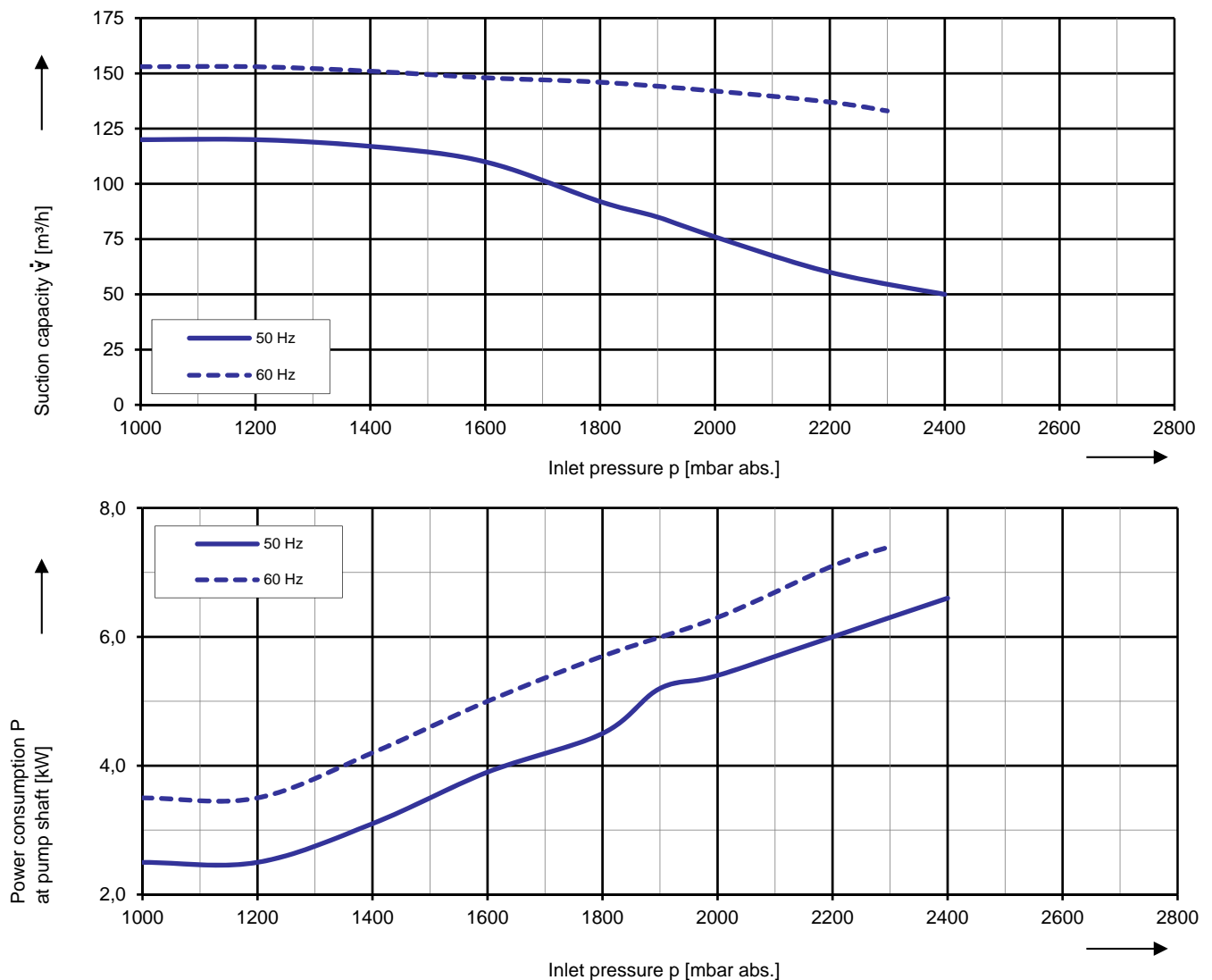
Elmo Rietschle compressors of the family L-BV54 are suitable for compressing gases and wet vapours.

The compressor of the model range 2BV5 are especially space-saving in their monoblock design. They are available in cast iron (standard color RAL 9006) and in stainless steel (all stainless steel parts are pickled and passivated). The motor is painted as standard in RAL 9006.



#### Performance curves

#### Compressor operation



The characteristic curves are based on the evacuation of 50 % saturated air and an intake temperature of 20 °C. At a suction pressure of 1013 mbar abs. and a temperature of the operating liquid of 15 °C (water as operating liquid) the characteristic curves will be achieved. The tolerance is  $\pm 10\%$ .

The motors are supplied as standard for the input voltage ranges of 50 and 60 Hz and for the protection category IP55 as well as approved for UL and CSA.

## Selection and ordering data

Typ 2BV5 471

Fre- quency	Rated			Service factor	Efficiency	Quantity of operating liquid 1)	Sound pressure level 2)	Weight Approx.	Order No.
	Voltage	Current	Power						
Hz	V	A	kW	SF	-	m <sup>3</sup> /h	dB(A)	kg	
<b>3~ 50/60 Hz, IP55, Insulation material class F, UL 1450 (certificate number E225239)</b>									
50	190-210 Δ	22,4 Δ	3,7	1,0	IE3	1,50	77	80	2BV5471-8 □ K02-1B
60	190-210 YY / 380-420 Y	25,4 YY / 12,7 Y	4,9	1,0	IE3	1,50	77		
	200 YY	21,5 YY	4,9	1,0	NP	1,50	77		
<b>3~ 50/60 Hz, IP55, Insulation material class F, UL 1450 (certificate number E225239)</b>									
50	220-240 Δ / 380-420 Y	19,3 Δ / 11,2 Y	3,7	1,0	IE3	1,50	77	80	2BV5471-8 □ K02-6B
60	220-240 YY / 440-480 Y	21,5 YY / 10,8 Y	4,9	1,0	IE3	1,50	77		
	230 YY / 460 Y	18,6 YY / 9,3 Y	4,9	1,0	NP	1,50	77		
<b>3~ 50/60 Hz, IP55, Insulation material class F, UL 1450 (certificate number E225239)</b>									
50	475-525 Y	9,8 Y	3,7	1,0	IE3	1,50	77	80	2BV5471-8 □ Q02-3B
60	550-600 Y	9,6 Y	4,9	1,0	NP	1,50	77		
<b>3~ 50/60 Hz, IP55, Insulation material class F, UL 1450 (certificate number E225239)</b>									
50	380-420 Δ / 660-725 Y	11,2 Δ / 6,5 Y	3,6	1,0	IE3	1,50	77	80	2BV5471-8 □ Q02-7B
60	440-480 Δ	11,0 Δ	4,7	1,0	IE3	1,50	77		
	460 Δ	9,3 Δ	4,7	1,0	NP	1,50	77		

Materials			
Casing	Port plate	Impeller	Lantern
Cast iron (internal surface with ceramic coating)	Cast iron	Cast iron	-
<b>E</b>			

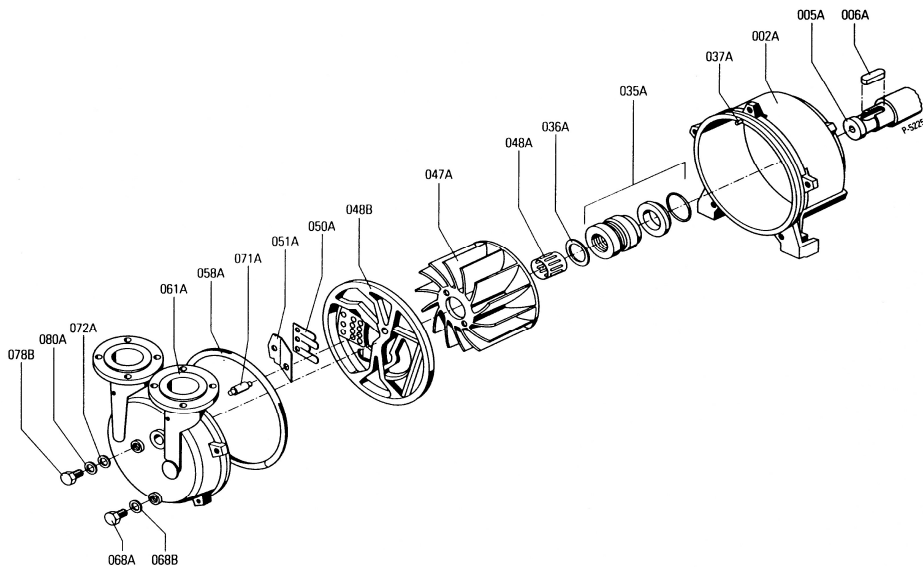
- 1) The quantities of operating liquid apply for fresh water operation without discharge liquid separator.
- 2) Measuring surface sound pressure level acc. to EN ISO 3744, measured with an equivalent unit at a distance of 1 m. The pump is throttled to an average suction pressure, with piping connected, but no relief valves fitted, tolerance ±3 dB (A).

Voltage range		Efficiency	60 Hz	2BV5...-... □ ... □
50 Hz	60Hz			
<b>3~</b>				
200 VΔ	200 V YY / 230 VΔ / 400 VY		•	K 1
190-210 VΔ	190-210 VYY / 220-240 VΔ / 380-420VY	IE3	•	K 1
200 V YY / 230 VΔ / 400 VY	230 V YY / 460 VY		•	K 6
190-210 VYY / 220-240 VΔ / 380-420VY	220-240 VYY / 440-480VY	IE3	•	K 6
475-525 V Y	550-600 V Y		•	Q 3
475-525 VΔ	550-600 VΔ		•	Q 5
400 VΔ / 690 V Y	460 VΔ		•	Q 7

All L-BV fulfil the 2006/42/EC (machinery) and 2006/95/EC (low voltage) directives and the EN 60034-1 norm "Rotating electrical machines". The motors comply with EN 60 034-1 / -2 / -30 (IEC 60034) and thermal class F. Voltage tolerances for three phase motors are +/-10%. The frequency tolerance is +/- 2 % maximum. Service factor (SF) and motor efficiency according NEMA MG1-12.

The cast iron machines are completely painted in standard color RAL 9006.

# Materials



Part No.		Materials	
			2BV54 ...-E..... Cast iron / Cast iron / Cast iron
002	Casing		Cast iron (EN-GJL HB 195 / EN-JL2030) EN 1561
005	Pump shaft		Chrome steel (X20Cr13 / 1.4021) EN 10088 - 3
006	Feather key		Chrome-nickel-molybdenum steel (X6CrNiMoTi 17-12-2 / 1.4571) EN 10088 - 3
035	Mechanical seal		Carbon / SiC / Viton (FPM) / Chrome-nickel-molybdenum steel (EN 12756 - BQ1VGG)
036	Washer		Chrome steel (X20Cr13 / 1.4021) EN 10088 - 3
037	Set screw		Chrome-nickel-molybdenum steel (X5CrNiMo 17-12-2 / 1.4401) EN 10088 - 3
047	Impeller		Cast iron (EN-GJL HB 195 / EN-JL2030) EN 1561
048	Tolerance ring for impeller		Chrome-nickel steel (X12CrNi 17-7 / 1.4310) EN 10088 - 2
058	Gasket for cover		Nitrile-butadiene-caotchouc (NBR 70) ISO 1629
061	Cover with integrated port plate		Cast iron (EN-GJL HB 195 / EN-JL2030) EN 1561
063	Screw		Steel (DIN ISO 8992)
068	Plug screw		Machining steel, lead alloyed (11SMnPb30 / 1.0718) EN 10087
069	Sealing ring		Aramid fiber, NBR, PTFE
071	Pipe of cavitation		Teflon (PTFE)
072	Washer for cavitation protection		Chrome-nickel steel (X5CrNi 18-10 / 1.4301) EN 10088 - 3
079	Plug screw		Machining steel, lead alloyed (11SMnPb30 / 1.0718) EN 10087
080	Sealing ring		Teflon (PTFE)

Changes in particular of the quoted performance curve, data and weights may occur without prior notice. The data given do not constitute an obligation from our side to deliver as shown.

Elmo Rietschle is a brand of Gardner Denver

**Gardner  
Denver**

Your Ultimate Source for Vacuum and Pressure

**Gardner Denver Deutschland GmbH**

Industriestraße 26  
97616 Bad Neustadt - Germany

Tel.: +49 9771 6888-0

Fax: +49 9771 6888-4000

www.gd-elmorietschle.com • er.de@gardnerdenver.com

**Gardner Denver Schopfheim GmbH**

Roggenbachstraße 58  
79650 Schopfheim - Germany

Tel.: +49 7622 392-0

Fax: +49 7622 392-300