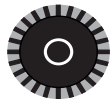
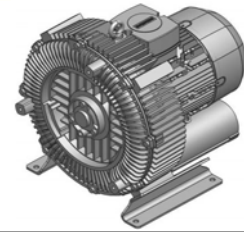


# G-BH1

## Data sheet 2BH1 830

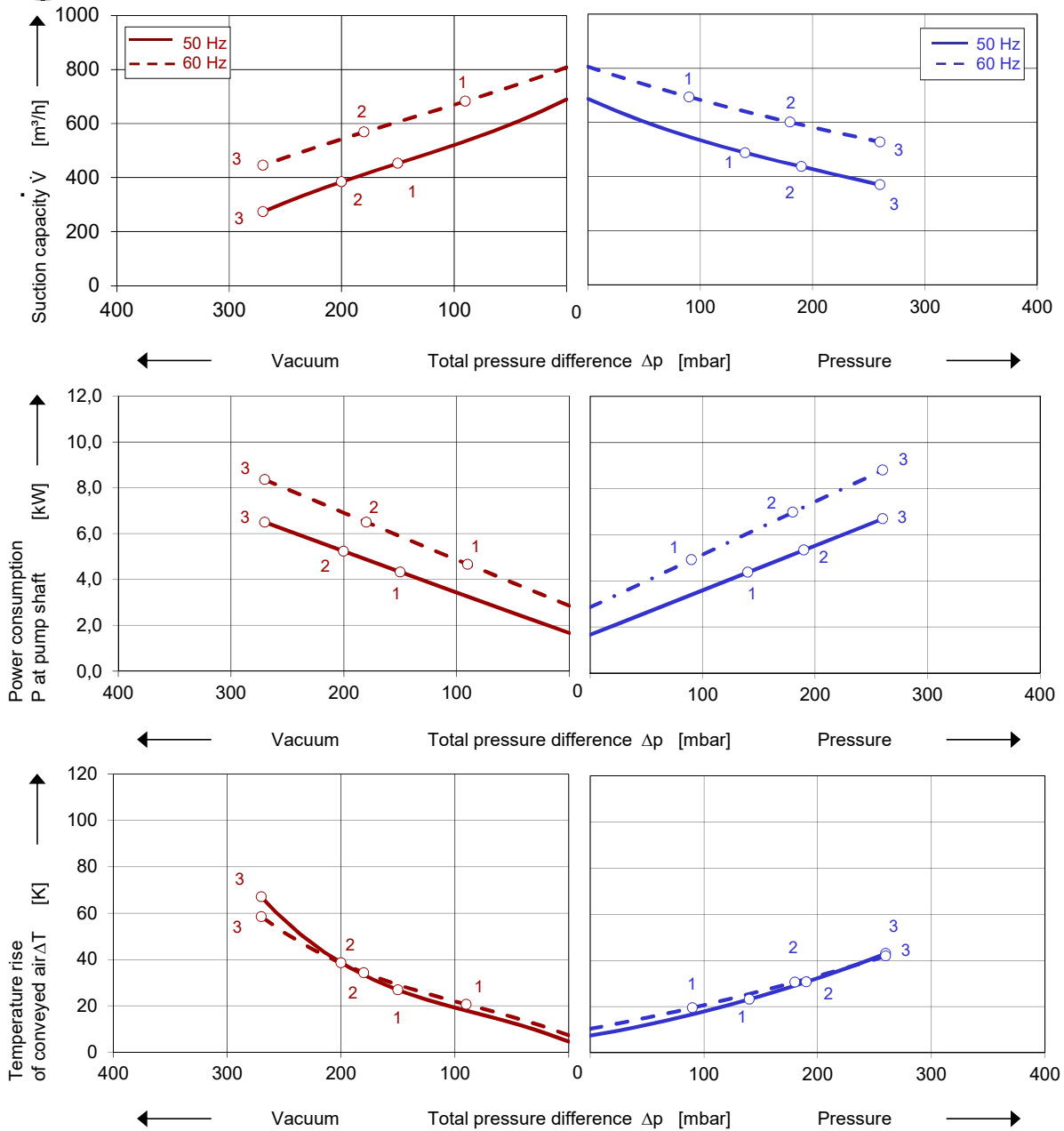
Side channel blower



### Performance curves

#### Vacuum operation

#### Compressor operation



The performance curves are based on air at a temperature of 15 °C and an atmospheric pressure of 1013 mbar with a tolerance of  $\pm 10\%$ . The total pressure differences are valid for suction and ambient temperature up to 25 °C. For other conditions please get in touch with us.

Every G-BH pump can be used both as vacuum pump and compressor in continuous operation over the total performance curve range. The motors are available as standard in protection category IP 55 and insulation class F. The vacuum pumps / compressors are UL and CSA approved.

## Selection and ordering data

Type 2BH1 830									
No.	Fre- quency				Max. differential pressure		Sound pressure level	Weight Approx.	Order No.
		Voltage	Current	Power	Vacuum	Pressure			
	Hz	V <sup>1)</sup>	A	kW	mbar <sup>2)</sup>		dB(A) <sup>3)</sup>	kg	
<b>3~ 50/60 Hz, IP55, Insulation material class F, UL 1450 and CNA/CSA 22.2 No 68-09 (certificate number E225239)</b>									
1	50	345-415 Δ / 600-720 Y	9,0 Δ / 5,2 Y	4,0	-150	140	69	112	2BH1830-1AH07
	60	380-480 Δ	9,0 Δ	4,6	-90	90	71		
2	50	345-415 Δ / 600-720 Y	13,3 Δ / 7,7 Y	5,5	-200	190	71	115	2BH1830-1AH17
	60	380-480 Δ	13,3 Δ	6,3	-180	180	75		
3	50	345-415 Δ / 600-720 Y	16,7 Δ / 9,6 Y	7,5	-270	260	71	121	2BH1830-1AH27
	60	380-480 Δ	17,3 Δ	8,6	-270	260	75		
<b>3~ 50/60 Hz, IP55, Insulation material class F, UL 1450 and CNA/CSA 22.2 No 68-09 (certificate number E225239)</b>									
1	50	500 Y	7,5 Y	4,0	-150	140	69	112	2BH1830-1AC03
	60	575 Y	7,6 Y	4,6	-90	90	71		
2	50	500 Y	10,5 Y	5,5	-200	190	71	115	2BH1830-1AC13
	60	575 Y	10,4 Y	6,3	-180	180	75		
3	50	500 Y	13,0 Y	7,5	-270	260	71	121	2BH1830-1AC23
	60	575 Y	13,6 Y	8,6	-270	260	75		

- 1) In case of frequency converter operation the standard motor insulation system is suitable for converter input voltages up to 460 V.
- 2) Relief valves available for limiting differential pressure.
- 3) Measuring surface sound pressure level acc. to EN ISO 3744, measured with an equivalent unit at a distance of 1 m. The pump is throttled to an average suction pressure, with piping connected, but no relief valves fitted, tolerance ±3 dB (A).

All G-BH match the 2006/42/EC (machinery) and 2014/35/EU (low voltage) directives and the EN 60034 norm "Rotating electrical machines".

The motors comply with EN 60 034 (IEC 60034) and thermal class F.

For three phase motors tolerances are +/-10% for fixed voltage motors and +/-5% for voltage range motors. Single phase machines are designed with a +/- 5% tolerance.

The frequency tolerance is +/- 2 % maximum.

## Motor for alternate voltages [V]

Voltage range		Fixed voltage		VFD	UL <sup>US</sup>		
50 Hz	60 Hz	50 Hz	60 Hz	87 Hz	60 Hz	2BH1830-.. □ . □	
					Δ / Y		
<b>3~</b>							
185 - 225 Δ / 320 - 390 Y 200 - 240 Δ / 345 - 415 Y 345 - 415 Δ / 600 - 720 Y	200 - 240 Δ / 345 - 415 Y 220 - 275 Δ / 380 - 480 Y 380 - 480 Δ / 660 - 720 Y	500 Y 500 Δ	575 Y 575 Δ	380 Δ	• • • •		H H C C 1 6 7 3 5
Voltage range				efficiency degree <sup>4)</sup>	UL <sup>US</sup>		
50 Hz		60 Hz			60 Hz	2BH1830-.. □ . □	
<b>3~ IE3 NEMA Premium<sup>5)</sup></b>							
200 Δ		200 YY / 230 Δ / 400 Y		NEMA Premium	•		K 1
190-210 Δ		190-210 YY / 220-240 Δ / 380-420 Y		IE3	•		K 6
200 YY / 230 Δ / 400 Y		230 YY / 460 Y		NEMA Premium	•		K 3
190-210 YY / 220-240 Δ / 380-420 Y		220-240 YY / 440-480 Y		IE3	•		K 5
475-525 V Y		550-600 V Y		NEMA Premium	•		Q 3
475-525 V Δ		550-600 V Δ		NEMA Premium	•		Q 5
400 V Δ / 690 V Y		460 V Δ		NEMA Premium	•		Q 7

- 4) The motors according to NEMA MG1-12. NP=NEMA Premium; NEMA Premium includes IE3.
- 5) Performance can differ if IE3/NP motors are used. Please refer to corresponding data sheets.

Changes in particular of the quoted performance curve, data and weights may occur without prior notice. The data given does not constitute an obligation from our side to deliver as show



Your Ultimate Source for Vacuum and Pressure

**Gardner Denver Deutschland GmbH**  
 Industriestraße 26  
 97616 Bad Neustadt - Germany  
 Tel.: +49 9771 6888-0  
 Fax: +49 9771 6888-4000  
 www.gd-elmorietschle.com • er.de@gardnerdenver.com

**Gardner Denver Schopfheim GmbH**  
 Johann-Sutter-Straße 6+8  
 79650 Schopfheim - Germany  
 Tel.: +49 7622 392-0  
 Fax: +49 7622 392-300