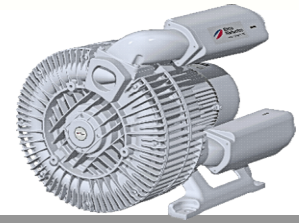




Elmo Rietschle

IE3

CE US



# G-BH 2 N

## Data sheet 2BH2 0360-2

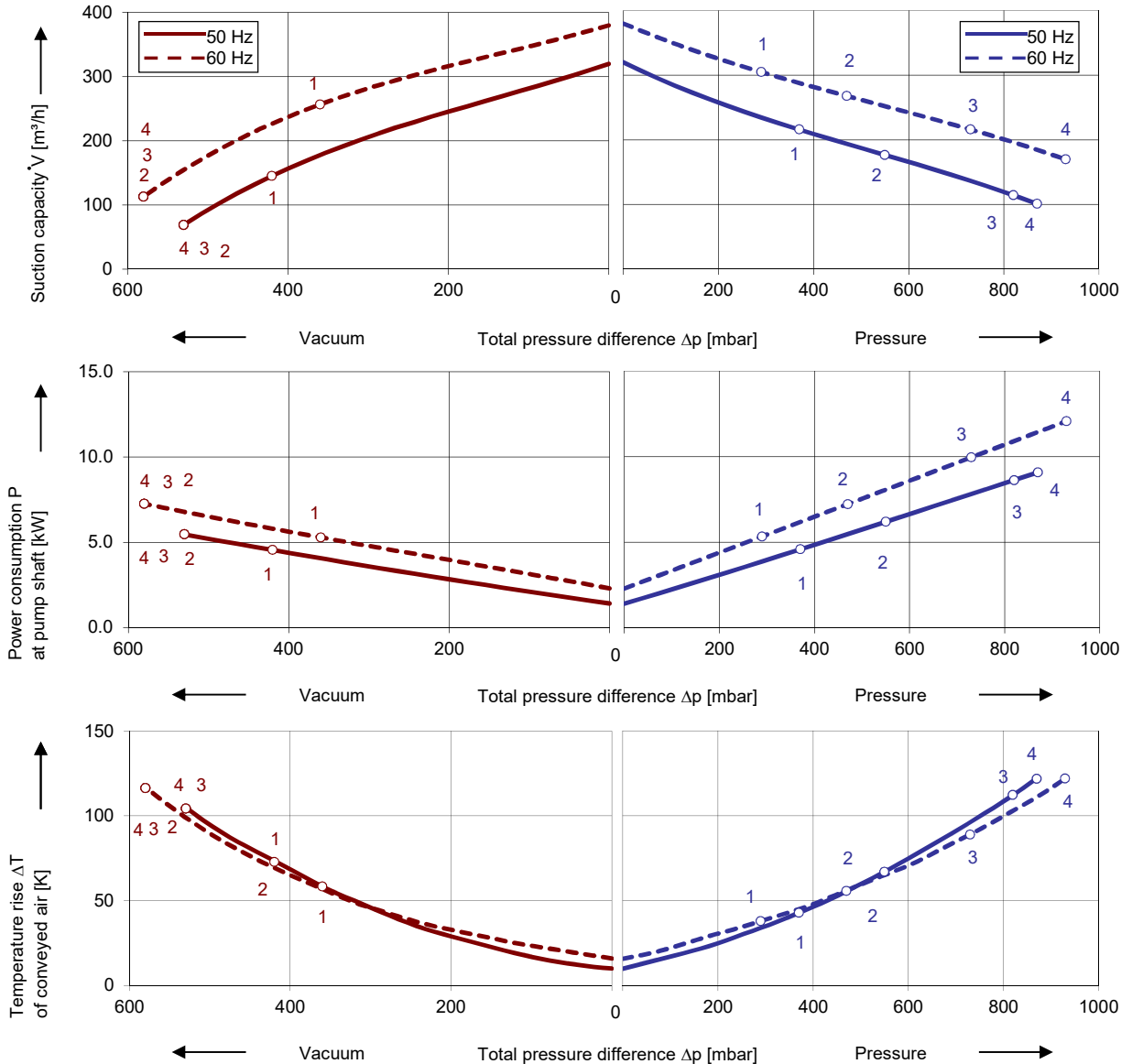
Side channel blower with IE3-motors



### Performance curves

#### Vacuum operation

#### Compressor operation



The performance curves are based on air at a temperature of 15 °C and an atmospheric pressure of 1013 mbar with a tolerance of ± 10 %. The total pressure differences are valid for suction and ambient temperature up to 25 °C. For other conditions please get in touch with us.

Every G-BH pump can be used both as vacuum pump and compressor in continuous operation over the total performance curve range. The motors are available as standard in protection category IP 55 and insulation class F. The vacuum pumps / compressors are UL and CSA approved.

## Selection and ordering data

Type										
No.	Fre- quency Hz	Rated			Max. differential pressure <sup>2)</sup>		Sound pr. level <sup>3)</sup> dB(A)	Efficiency <sup>4)</sup>	Weight Approx. kg	Order No.
		Voltage <sup>1)</sup> V	Current A	Power kW	Vacuum mbar	Pressure				
<b>IE3 3- 50/60 Hz, IP55, Insulation material class F, UL 1450 and CAN/CSA C22.2 No. 68-09 (certificate number E225239)</b>										
1	50	190-210 Δ	17.1 Δ	4.6	-420	370	65	IE3	92	2BH20360-2AAKL1-BA
	60	190-210 YY / 380-420 Y	19.6 YY / / 9.8 Y	5.3	-360	290	69	IE3		
	60	200 YY	19.6 YY	5.3	-360	290	69	NP		
2	50	190-210 Δ	23.5 Δ	6.3	-530	550	70	IE3	99	2BH20360-2AAKM1-BA
	60	190-210 YY / 380-420 Y	27.6 YY / / 13.8 Y	7.3	-580	470	75	IE3		
	60	200 YY	27.6 YY	7.3	-580	470	75	NP		
3	50	190-210 Δ	30.8 Δ	8.6	-530	820	70	IE3	111	2BH20360-2AAKN1-BA
	60	190-210 YY / 380-420 Y	35.2 YY / / 17.6 Y	9.9	-580	730	75	IE3		
	60	200 YY	35.2 YY	9.9	-580	730	75	NP		
4	50	190-210 Δ	46.4 Δ	12.6	-530	870	71	IE3	130	2BH20360-2AAKP1-BA
	60	190-210 YY / 380-420 Y	52.8 YY / / 26.4 Y	14.5	-580	930	76	IE3		
	60	200 YY	52.8 YY	14.5	-580	930	76	NP		
<b>IE3 3- 50/60 Hz, IP55, Insulation material class F, UL 1450 and CAN/CSA C22.2 No. 68-09 (certificate number E225239)</b>										
1	50	220-240 Δ / 380-420 Y	14.9 Δ / / 8.6 Y	4.6	-420	370	65	IE3	92	2BH20360-2AAKL6-BA
	60	220-240 YY / 440-480 Y	17.0 YY / / 8.5 Y	5.3	-360	290	69	IE3		
	60	230 YY / 460 Y	17.0 YY / / 8.5 Y	5.30	-360	290	69	NP		
2	50	220-240 Δ / 380-420 Y	20.4 Δ / / 11.8 Y	6.3	-530	550	70	IE3	99	2BH20360-2AAKM6-BA
	60	220-240 YY / 440-480 Y	24.0 YY / / 12.0 Y	7.3	-580	470	75	IE3		
	60	230 YY / 460 Y	24.0 YY / / 12.0 Y	7.3	-580	470	75	NP		
3	50	220-240 Δ / 380-420 Y	26.8 Δ / / 15.5 Y	8.6	-530	820	70	IE3	111	2BH20360-2AAKN6-BA
	60	220-240 YY / 440-480 Y	30.6 YY / / 15.3 Y	9.9	-580	730	75	IE3		
	60	230 YY / 460 Y	30.6 YY / / 15.3 Y	9.9	-580	730	75	NP		
4	50	220-240 Δ / 380-420 Y	40.3 Δ / / 23.3 Y	12.6	-530	870	71	IE3	130	2BH20360-2AAKP6-BA
	60	220-240 YY / 440-480 Y	46.0 YY / / 23.0 Y	14.5	-580	930	76	IE3		
	60	230 YY / 460 Y	46.0 YY / / 23.0 Y	14.5	-580	930	76	NP		
<b>IE3 3- 50/60 Hz, IP55, Insulation material class F, UL 1450 and CAN/CSA C22.2 No. 68-09 (certificate number E225239)</b>										
1	50	475-525 Y	6.9 Y	4.6	-420	370	65	IE3	92	2BH20360-2AAQL3-BA
	60	550-600 Y	6.8 Y	5.3	-360	290	69	NP		
2	50	475-525 Y	9.5 Y	6.3	-530	550	70	IE3	99	2BH20360-2AAQM3-BA
	60	550-600 Y	9.6 Y	7.3	-580	470	75	NP		
3	50	475-525 Y	12.4 Y	8.6	-530	820	70	IE3	111	2BH20360-2AAQN3-BA
	60	550-600 Y	12.2 Y	9.9	-580	730	75	NP		
4	50	475-525 Y	18.6 Y	12.6	-530	870	71	IE3	129	2BH20360-2AAQP3-BA
	60	550-600 Y	18.4 Y	14.5	-580	930	76	NP		
<b>IE3 3- 50/60 Hz, IP55, Insulation material class F, UL 1450 and CAN/CSA C22.2 No. 68-09 (certificate number E225239)</b>										
1	50	380-420 Δ / 660-725 Y	8.6 Δ / / 5.0 Y	4.6	-420	370	65	IE3	92	2BH20360-2AAQL7-BA
	60	440-480 Δ	8.5 Δ	5.3	-360	290	69	IE3		
	60	460 Δ	8.5 Δ	5.30	-360	290	69	NP		
2	50	380-420 Δ / 660-725 Y	11.8 Δ / / 6.8 Y	6.3	-530	550	70	IE3	99	2BH20360-2AAQM7-BA
	60	440-480 Δ	12.0 Δ	7.3	-580	470	75	IE3		
	60	460 Δ	12.0 Δ	7.3	-580	470	75	NP		
3	50	380-420 Δ / 660-725 Y	15.5 Δ / / 8.9 Y	8.6	-530	820	70	IE3	111	2BH20360-2AAQN7-BA
	60	440-480 Δ	15.3 Δ	9.9	-580	730	75	IE3		
	60	460 Δ	15.3 Δ	9.9	-580	730	75	NP		
4	50	380-420 Δ / 660-725 Y	23.3 Δ / / 13.4 Y	12.6	-530	870	71	IE3	129	2BH20360-2AAQP7-BA
	60	440-480 Δ	23.0 Δ	14.5	-580	930	76	IE3		
	60	460 Δ	23.0 Δ	14.5	-580	930	76	NP		

2) Relief valves available for limiting differential pressure.

3) Measuring surface sound pressure level acc. to EN ISO 3744, measured with an equivalent unit at a distance of 1 m. The pump is throttled to an average suction pressure, with piping connected, but no relief valves fitted, tolerance ±3 dB (A).

4) The motors according to NEMA MG1-12. NP=NEMA Premium; NEMA Premium includes IE3.

All G-BH match the 2006/42/EC (machinery) and 2006/95/EC (low voltage) directives and the EN 60034 norm "Rotating electrical machines".

Service factor (SF) and motor efficiency according NEMA MG1-12.

Voltage tolerances for three phase motors are +/-10%.

The frequency tolerance is +/- 2 % maximum.

## Motor for alternate voltages

Voltage range		Efficiency <sup>4)</sup>	NEMA Premium	60 Hz	2BH2...-... □ . □
50 Hz	60Hz				
3~					
200 VΔ	200 V YY / 230 VΔ / 400 VY				
190-210 VΔ	190-210 VYY / 220-240 VΔ / 380-420VY		IE3	•	K 1
200 V YY / 230 VΔ / 400 VY	230 V YY / 460 VY		NEMA Premium	•	
190-210 VYY / 220-240 VΔ / 380-420VY	220-240 VYY / 440-480VY		IE3	•	K 6
475-525 V Y	550-600 V Y		NEMA Premium	•	Q 3
475-525 VΔ	550-600 VΔ		NEMA Premium	•	Q 5
400 VΔ / 690 V Y	460 VΔ		NEMA Premium	•	Q 7

Changes in particular of the quoted performance curve, data and weights may occur without prior notice. The data given does not constitute an obligation from our side to deliver as shown.



Your Ultimate Source for Vacuum and Pressure

**Gardner Denver Deutschland GmbH**  
 Industriestraße 26  
 97616 Bad Neustadt - Germany  
 Tel.: +49 9771 6888-0  
 Fax: +49 9771 6888-4000  
 www.gd-elmorietschle.com

**Gardner Denver Schopfheim GmbH**  
 Johann-Sutter-Straße 6+8  
 79650 Schopfheim - Germany  
 Tel.: +49 7622 392-0  
 Fax: +49 7622 392-300

• er.de@gardnerdenver.com