

**Elmo
Rietschle**

IE3

CAUS



G-BH 2 N

Data sheet 2BH2 0780-3

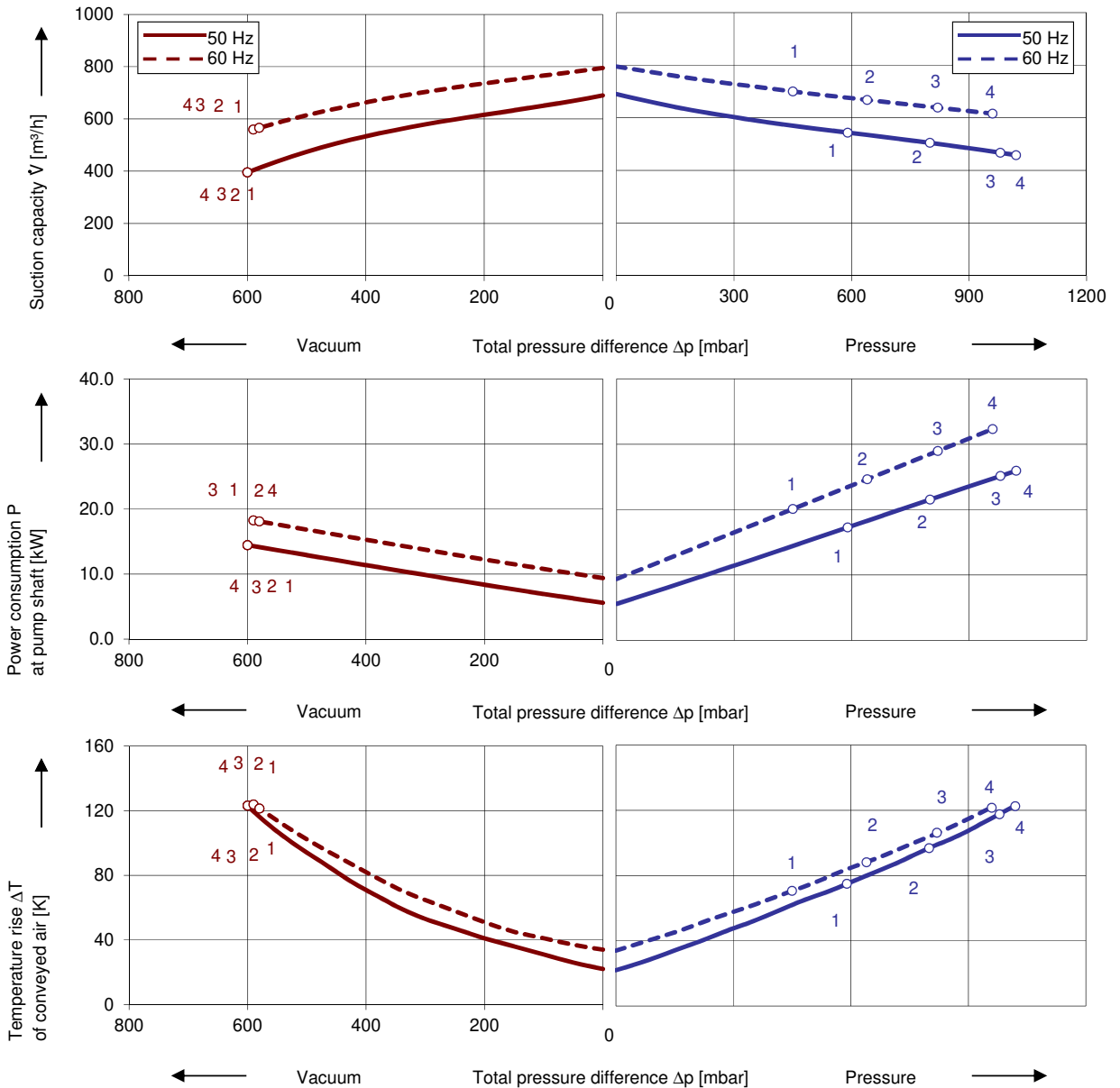
Side channel blower with IE3-motors



Performance curves

Vacuum operation

Compressor operation



The performance curves are based on air at a temperature of 15 °C and an atmospheric pressure of 1013 mbar with a tolerance of $\pm 10\%$. The total pressure differences are valid for suction and ambient temperature up to 25 °C. For other conditions please get in touch with us.

Every G-BH pump can be used both as vacuum pump and compressor in continuous operation over the total performance curve range. The motors are available as standard in protection category IP 55 and insulation class F. The vacuum pumps / compressors are UL and CSA approved.

Selection and ordering data

Type										
No.	Frequency Hz	Rated			Max. differential pressure ²⁾		Sound pres. Level ³⁾ dB(A)	Efficiency class ⁴⁾	Weight approx. kg	Order No.
		Voltage ¹⁾	Current	Power	Vacuum	Pressure				
		V	A	kW	mbar					
IE3 3~ 50/60 Hz, IP55, Insulation material class F, UL 1450 and CAN/CSA C22.2 No. 68-09 (certificate number E225239)										
1	50	190-210 Δ	63.1 Δ	17.3	-600	590	71	IE3	242	2BH20780-3AAKQ1-BA
	60	190-210 YY / 380-420 Y	72.2 YY / / 36.1 Y	19.9	-590	450	75	IE3		
	60	200 YY	72.2 YY	19.9	-590	450	75	NP		
2	50	190-210 Δ	76.2 Δ	21.3	-600	800	71	IE3	254	2BH20780-3AAKR1-BA
	60	190-210 YY / 380-420 Y	87.4 YY / / 43.7 Y	24.5	-590	640	75	IE3		
	60	200 YY	87.4 YY	24.5	-590	640	75	NP		
3	50	190-210 Δ	91.5 Δ	25.3	-600	980	71	IE3	301	2BH20780-3AAKS1-BA
	60	190-210 YY / 380-420 Y	103 YY / / 51.5 Y	28.5	-580	820	75	IE3		
	60	200 YY	103 YY	28.5	-580	820	75	NP		
IE3 3~ 50/60 Hz, IP55, Insulation material class F, UL 1450 and CAN/CSA C22.2 No. 68-09 (certificate number E225239)										
1	50	220-240 Δ / 380-420 Y	54.9 Δ / / 31.7 Y	17.3	-600	590	71	IE3	242	2BH20780-3AAKQ6-BA
	60	220-240 YY / 440-480 Y	62.8 YY / / 31.4 Y	19.9	-590	450	75	IE3		
	60	230 YY / 460 Y	62.8 YY / / 31.4 Y	19.9	-590	450	75	NP		
2	50	220-240 Δ / 380-420 Y	66.3 Δ / / 38.3 Y	21.3	-600	800	71	IE3	254	2BH20780-3AAKR6-BA
	60	220-240 YY / 440-480 Y	76.0 YY / / 38.0 Y	24.5	-590	640	75	IE3		
	60	230 YY / 460 Y	76.0 YY / / 38.0 Y	24.5	-590	640	75	NP		
3	50	220-240 Δ / 380-420 Y	79.5 Δ / / 46.0 Y	25.3	-600	980	71	IE3	301	2BH20780-3AAKS6-BA
	60	220-240 YY / 440-480 Y	90.0 YY / / 45.0 Y	28.5	-580	820	75	IE3		
	60	230 YY / 460 Y	90.0 YY / / 45.0 Y	28.5	-580	820	75	NP		
IE3 3~ 50/60 Hz, IP55, Insulation material class F, UL 1450 and CAN/CSA C22.2 No. 68-09 (certificate number E225239)										
1	50	475-525 Y 475-525	Y /	17.3	-600	590	71	IE3	242	2BH20780-3AAQQ3-BA
	60	550-600 Y 475-525	0.0 Y /	19.9	-590	450	75	NP		
	60	475-525 Y 475-525	Y /	21.3	-600	800	71	IE3		
2	50	475-525 Y 475-525	Y /	21.3	-600	800	71	IE3	254	2BH20780-3AAQR3-BA
	60	550-600 Y 475-525	0.0 Y /	24.5	-590	640	75	NP		
	60	475-525 Y 475-525	Y /	25.3	-600	980	71	IE3		
3	50	475-525 Y 475-525	Y /	25.3	-600	980	71	IE3	301	2BH20780-3AAQS3-BA
	60	550-600 Y 475-525	0.0 Y /	28.5	-580	820	75	NP		
	60	475-525 Y 475-525	Y /	25.3	-600	980	71	IE3		
IE3 3~ 50/60 Hz, IP55, Insulation material class F, UL 1450 and CAN/CSA C22.2 No. 68-09 (certificate number E225239)										
1	50	380-420 Δ / 660-725 0	31.7 Δ / / 18.3 Y	17.3	-600	590	71	IE3	242	2BH20780-3AAQQ7-BA
	60	440-480 Δ	31.4 Δ /	19.9	-590	450	75	IE3		
	60	460 Δ	31.4 Δ /	19.9	-590	450	75	NP		
2	50	380-420 Δ / 660-725 0	38.3 Δ / / 22.1 Y	21.3	-600	800	71	IE3	254	2BH20780-3AAQR7-BA
	60	440-480 Δ	38.0 Δ /	24.5	-590	640	75	IE3		
	60	460 Δ	38.0 Δ /	24.5	-590	640	75	NP		
3	50	380-420 Δ / 660-725 0	46.0 Δ / / 26.5 Y	25.3	-600	980	71	IE3	301	2BH20780-3AAQS7-BA
	60	440-480 Δ	45.0 Δ /	28.5	-580	820	75	IE3		
	60	460 Δ	45.0 Δ /	28.5	-580	820	75	NP		

- 2) Relief valves available for limiting differential pressure.
- 3) Measuring surface sound pressure level acc. to EN ISO 3744, measured with an equivalent unit at a distance of 1 m. The pump is throttled to an average suction pressure, with piping connected, but no relief valves fitted, tolerance ±3 dB (A).
- 4) The motors according to NEMA MG1-12. NP=NEMA Premium; NEMA Premium includes IE3.

All G-BH match the 2006/42/EC (machinery) and 2006/95/EC (low voltage) directives and the EN 60034 norm "Rotating electrical machines".

Service factor (SF) and motor efficiency according NEMA MG1-12.

Voltage tolerances for three phase motors are +/-10%.

The frequency tolerance is +/- 2 % maximum.

Motor for alternate voltages

Voltage range		Efficiency ⁴⁾	cUL [®] US	2BH2.....-... □ . □	
50 Hz	60Hz			60 Hz	
3~					
200 VΔ	200 V YY / 230 VΔ / 400 VY				
190-210 VΔ	190-210 VYY / 220-240 VΔ / 380-420VY				
200 V YY / 230 VΔ / 400 VY	230 V YY / 460 VY				
190-210 VYY / 220-240 VΔ / 380-420VY	220-240 VYY / 440-480VY				
475-525 V Y	550-600 V Y				
475-525 VΔ	550-600 VΔ				
400 VΔ / 690 V Y	460 VΔ				

Changes in particular of the quoted performance curve, data and weights may occur without prior notice. The data given does not constitute an obligation from our side to deliver as sho



Your Ultimate Source for Vacuum and Pressure

Gardner Denver Deutschland GmbH

Industriestraße 26
97616 Bad Neustadt - Germany
Tel.: +49 9771 6888-0
Fax: +49 9771 6888-4000

www.gd-elmorietschle.com • er.de@gardnerdenver.com

Gardner Denver Schopfheim GmbH

Johann-Sutter-Straße 6+8
79650 Schopfheim - Germany
Tel.: +49 7622 392-0
Fax: +49 7622 392-300