

**Elmo
Rietschle**

IE3

CE **UL** **CSA**



G-BH 2 N

Data sheet 2BH2 0360-3

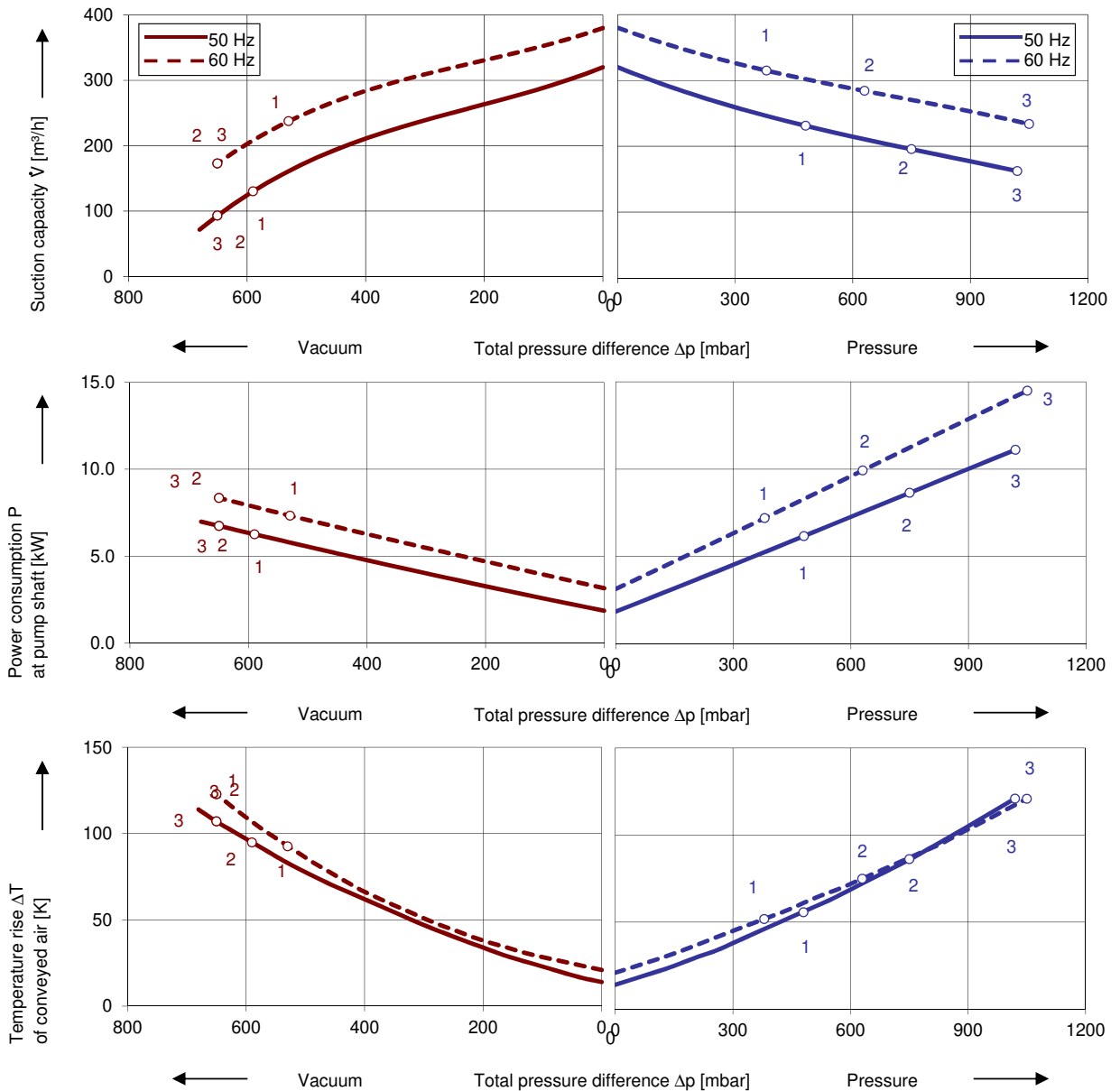
Side channel blower with IE3-motors



Performance curves

Vacuum operation

Compressor operation



The performance curves are based on air at a temperature of 15 °C and an atmospheric pressure of 1013 mbar with a tolerance of $\pm 10\%$. The total pressure differences are valid for suction and ambient temperature up to 25 °C. For other conditions please get in touch with us.

Every G-BH pump can be used both as vacuum pump and compressor in continuous operation over the total performance curve range. The motors are available as standard in protection category IP 55 and insulation class F. The vacuum pumps / compressors are UL and CSA approved.

Selection and ordering data

Type											
No.	Fre- quency	Rated			Max. differential pressure ²⁾		Sound pr. level ³⁾ dB(A)	Efficiency ⁴⁾	Weight	Order No.	
		Voltage ¹⁾		Current	Power	Vacuum					Pressure
		Hz	V	A	kW	mbar					
IE3 3~ 50/60 Hz, IP55, Insulation material class F, UL 1450 and CAN/CSA C22.2 No. 68-09 (certificate number E225239)											
1	50	190-210 Δ	23.5 Δ	6.3	-590	480	69	IE3	119	2BH20360-3AAKM1-BA	
	60	190-210 YY / 380-420 Y	27.6 YY / / 13.8 Y	7.3	-530	380	74	IE3			
	60	200 YY	27.6 YY	7.3	-530	380	74	NP			
2	50	190-210 Δ	30.8 Δ	8.6	-650	750	69	IE3	130	2BH20360-3AAKN1-BA	
	60	190-210 YY / 380-420 Y	35.2 YY / / 17.6 Y	9.9	-650	630	74	IE3			
	60	200 YY	35.2 YY	9.9	-650	630	74	NP			
3	50	190-210 Δ	46.4 Δ	12.6	-650	1020	70	IE3	158	2BH20360-3AAKP1-BA	
	60	190-210 YY / 380-420 Y	52.8 YY / / 26.4 Y	14.5	-650	1050	75	IE3			
	60	200 YY	52.8 YY	14.5	-650	1050	75	NP			
IE3 3~ 50/60 Hz, IP55, Insulation material class F, UL 1450 and CAN/CSA C22.2 No. 68-09 (certificate number E225239)											
1	50	220-240 Δ / 380-420 Y	20.4 Δ / / 11.8 Y	6.3	-590	480	69	IE3	119	2BH20360-3AAKM6-BA	
	60	220-240 YY / 440-480 Y	24.0 YY / / 12.0 Y	7.3	-530	380	74	IE3			
	60	230 YY / 460 Y	24.0 YY / / 12.0 Y	7.30	-530	380	74	NP			
2	50	220-240 Δ / 380-420 Y	26.8 Δ / / 15.5 Y	8.6	-650	750	69	IE3	130	2BH20360-3AAKN6-BA	
	60	220-240 YY / 440-480 Y	30.6 YY / / 15.3 Y	9.9	-650	630	74	IE3			
	60	230 YY / 460 Y	30.6 YY / / 15.3 Y	9.9	-650	630	74	NP			
3	50	220-240 Δ / 380-420 Y	40.3 Δ / / 23.3 Y	12.6	-650	1020	70	IE3	158	2BH20360-3AAKP6-BA	
	60	220-240 YY / 440-480 Y	46.0 YY / / 23.0 Y	14.5	-650	1050	75	IE3			
	60	230 YY / 460 Y	46.0 YY / / 23.0 Y	14.5	-650	1050	75	NP			
IE3 3~ 50/60 Hz, IP55, Insulation material class F, UL 1450 and CAN/CSA C22.2 No. 68-09 (certificate number E225239)											
1	50	475-525 Y	9.5 Y	6.3	-590	480	69	IE3	118	2BH20360-3AAQM3-BA	
	60	550-600 Y	9.6 Y	7.3	-530	380	74	NP			
2	50	475-525 Y	12.4 Y	8.6	-650	750	69	IE3	130	2BH20360-3AAQN3-BA	
	60	550-600 Y	12.2 Y	9.9	-650	630	74	NP			
3	50	475-525 Y	18.6 Y	12.6	-650	1020	70	IE3	157	2BH20360-3AAQP3-BA	
	60	550-600 Y	18.4 Y	14.5	-650	1050	75	NP			
IE3 3~ 50/60 Hz, IP55, Insulation material class F, UL 1450 and CAN/CSA C22.2 No. 68-09 (certificate number E225239)											
1	50	380-420 Δ / 660-725 Y	11.8 Δ / / 6.8 Y	6.3	-590	480	69	IE3	118	2BH20360-3AAQM7-BA	
	60	440-480 Δ	12.0 Δ	7.3	-530	380	74	IE3			
	60	460 Δ	12.0 Δ	7.30	-530	380	74	NP			
2	50	380-420 Δ / 660-725 Y	15.5 Δ / / 8.9 Y	8.6	-650	750	69	IE3	130	2BH20360-3AAQN7-BA	
	60	440-480 Δ	15.3 Δ	9.9	-650	630	74	IE3			
	60	460 Δ	15.3 Δ	9.9	-650	630	74	NP			
3	50	380-420 Δ / 660-725 Y	23.3 Δ / / 13.4 Y	12.6	-680	1020	70	IE3	157	2BH20360-3AAQP7-BA	
	60	440-480 Δ	23.0 Δ	14.5	-650	1050	75	IE3			
	60	460 Δ	23.0 Δ	14.5	-650	1050	75	NP			

- Relief valves available for limiting differential pressure.
- Measuring surface sound pressure level acc. to EN ISO 3744, measured with an equivalent unit at a distance of 1 m. The pump is throttled to an average suction pressure, with piping connected, but no relief valves fitted, tolerance ±3 dB (A).
- The motors according to NEMA MG1-12. NP=NEMA Premium; NEMA Premium includes IE3.

All G-BH match the 2006/42/EC (machinery) and 2006/95/EC (low voltage) directives and the EN 60034 norm "Rotating electrical machines".

Service factor (SF) and motor efficiency according NEMA MG1-12.

Voltage tolerances for three phase motors are +/-10%.

The frequency tolerance is +/- 2 % maximum.

Motor for alternate voltages

Voltage range		Efficiency ⁴⁾	cUL [®] US	2BH2...-... □ . □
50 Hz	60Hz			
3~				
200 VΔ	200 V YY / 230 VΔ / 400 VY			K 1
190-210 VΔ	190-210 VYY / 220-240 VΔ / 380-420VY	IE3		
200 V YY / 230 VΔ / 400 VY	230 V YY / 460 VY			K 6
190-210 VYY / 220-240 VΔ / 380-420VY	220-240 VYY / 440-480VY	IE3		
475-525 V Y	550-600 V Y			Q 3
475-525 VΔ	550-600 VΔ			Q 5
400 VΔ / 690 V Y	460 VΔ			Q 7

Changes in particular of the quoted performance curve, data and weights may occur without prior notice. The data given does not constitute an obligation from our side to deliver as shown.



Your Ultimate Source for Vacuum and Pressure

Gardner Denver Deutschland GmbH
 Industriestraße 26
 97616 Bad Neustadt - Germany
 Tel.: +49 9771 6888-0
 Fax: +49 9771 6888-4000
 www.gd-elmorietschle.com

Gardner Denver Schopfheim GmbH
 Johann-Sutter-Straße 6+8
 79650 Schopfheim - Germany
 Tel.: +49 7622 392-0
 Fax: +49 7622 392-300

er.de@gardnerdenver.com